

Chatillon® 1300 Series Autopsy Scales

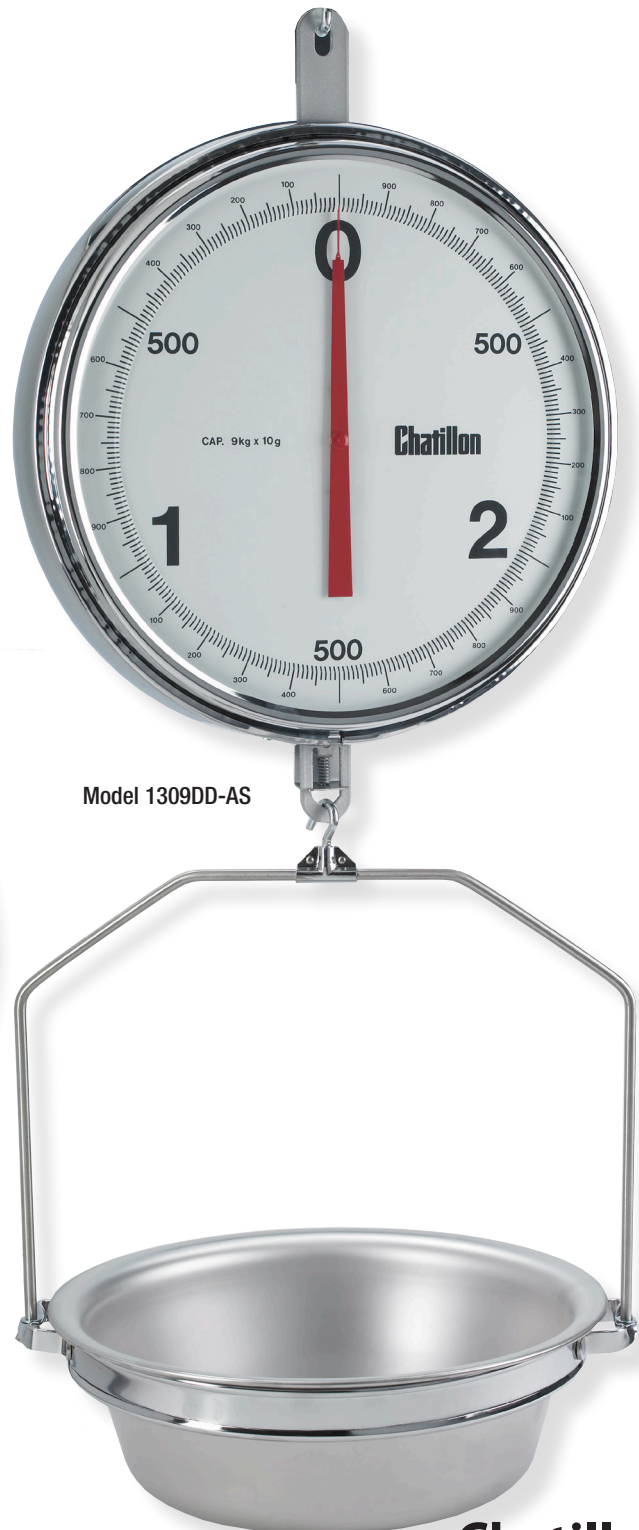
The CHATILLON® 1300 Series mechanical hanging scales feature a large, 13-inch (330 mm) double dial with chrome-plated housing. Scales have large numerals and graduations for easy reading. Scale capacity is achieved in 3 dial revolutions. Dials are glass-covered with one dial reading clockwise and the other counterclockwise. The dials feature bold black numbers and graduations with a contrasting red pointer. Two brass dashpots eliminate pointer oscillation for accurate, stable readings. Stainless steel pinion and bronze rack combination ensure low friction performance even in elevated temperatures. A zero adjust screw allows for tare outs up to 10% of dial reading (3.3% of scale capacity). Scale may be supplied with bottom hook or removable pan. The removable pan is constructed of 300 series stainless steel and features drain holes per USDA specifications. Scales include holding loop.

Features

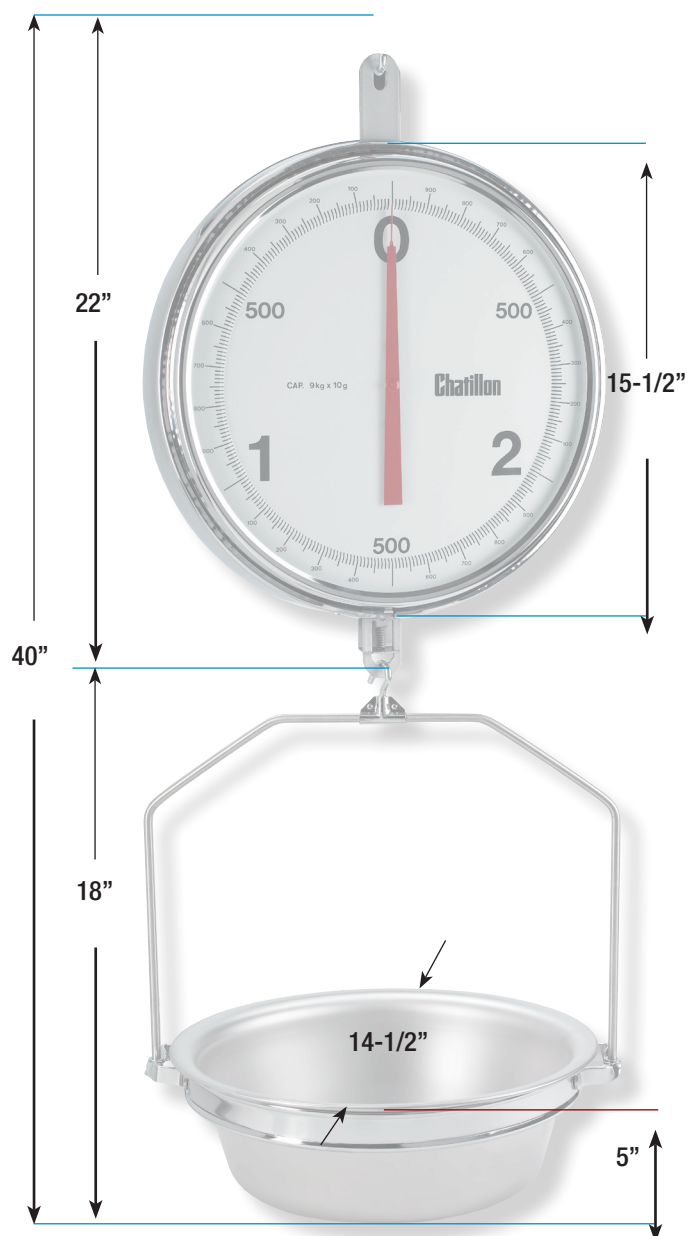
- Temperature Compensated Dual Spring Mechanism
- No Pointer Oscillation
- Full Capacity in Three Pointer Revolutions
- Double 13-inch Dials (Glass Covered)
- Bottom Hook or AS Attachments
- 1 Year Warranty

Specifications

Accuracy:	See Ordering Table
Dial Graduations:	3 kg x 3 g or 5 kg x 25 g
Maximum Overload:	120% of Rated Capacity
Tare Capacity:	10% Full Scale Capacity
Operating Temperature:	45°F to 100°F (7°C to 38°C)
Weight with Hook:	14 lbs (6.4 kg)
Weight with AS Pan:	18 lbs (8.2 kg)



Dimensions



Accessories

Part No.	Description
5854	Bottom Hook
SPK-SCALE-AS	AS Pan Assembly (4 lbs)
7436-1	AS Pan Only
16097	Bow, for AS Pan
16098	Ring, for AS Pan

Ordering

Bottom Hook Models

Model	Resolution	Range	Scale		Tolerance		%Accurate
			Divisions	Division	Weight		
1309DD-H	9 kg x 10 g	0 - 1/2 kg	0 - 50	±1/2 d	±5 g	±0.05%	
			51 - 200	±1 d	±10 g	±0.11%	
		1/2 - 2 kg	201 - 400	±1-1/2 d	±15 g	±0.17%	
			400 +	±2-1/2 d	±25 g	±0.28%	
1315DD-H	15 kg x 25 g	0 - 1 kg	0 - 50	+1/2 d	±12.5 g	±0.08%	
			51 - 200	±1 d	±25 g	±0.17%	
		2 - 5 kg	201 - 400	±1-1/2 d	±37.5 g	±0.25%	
			400 +	±2-1/2 d	±62.5 g	±0.42%	

Sanitary AS Pan Models

Model	Resolution	Range	Scale		Tolerance		%Accurate
			Divisions	Division	Weight		
1309DD-AS	9 kg x 10 g	0 - 1/2 kg	0 - 50	±1/2 d	±5 g	±0.05%	
			51 - 200	±1 d	±10 g	±0.11%	
		1/2 - 2 kg	201 - 400	±1-1/2 d	±15 g	±0.17%	
			400 +	±2-1/2 d	±25 g	±0.28%	
1315DD-AS	15 kg x 25 g	0 - 1 kg	0 - 50	+1/2 d	+12.5 g	+0.08%	
			51 - 200	±1 d	±25 g	±0.17%	
		2 - 5 kg	201 - 400	±1-1/2 d	±37.5 g	±0.25%	
			400 +	±2-1/2 d	±62.5 g	±0.42%	

UK

Tel +44 (0)1243 833 370
uk-far.general@ametek.co.uk

France

Tel +33 (0)1 30 68 89 40
general.lloyd-instruments@ametek.fr

Germany

Tel +49 (0)2159 9136 510
info.mct-de@ametek.de

Denmark

Tel +45 4816 8000
ametekdk@ametek.com

USA

Florida
Tel +1 (727) 538 6000
chatillon.fl-lar@ametek.com

California

Tel +1 (800) 444 1850
sales@crystalengineering.net

India

Tel +91 22 2836 4750
ametekdk@ametek.com

Singapore

Tel +65 6484 2388
ametekdk@ametek.com

China

Shanghai
Tel +86 21 5868 5111

Beijing

Tel +86 10 8526 2111

Guangzhou

Tel +86 20 8363 4768
lloyd@ametek.com.cn